

# Type 1500-FLF

## Angle type In-line Valve



The angle type pressure/vacuum relief valve type 1500-FLF operates through the header in common venting systems or, in smaller versions, through the branch pipe. It is designed to relieve pressure and vacuum during loading, discharging, voyage (thermal variation and sloshing) and ballasting. Cargo operation is possible with the valve in automatic and manual mode, provided of course that the IG pressure is monitored or controlled. The downstream outlet should be through an approved device to prevent the passage of flame according to IMO MSC/Circ. 677. Like with all common venting systems, attention should be paid to the possibility of operation with tanks not having individual protection against overpressurization caused by cargo transfer or ballasting. A locking arrangement is advisable to protect against inadvertant gas entry while a tank is being inspected.

Angle type in-line pressure/vacuum valve type 1500-FLF

### Features of type 1500-FLF:

- IMO acceptable with approved flame screen or flame arrester
- Automatic or manual mode
- Separate pressure and vacuum units
- Available in materials compatible with any cargo
- Simple and rigid design
- Easy maintenance

*Options: See specification*

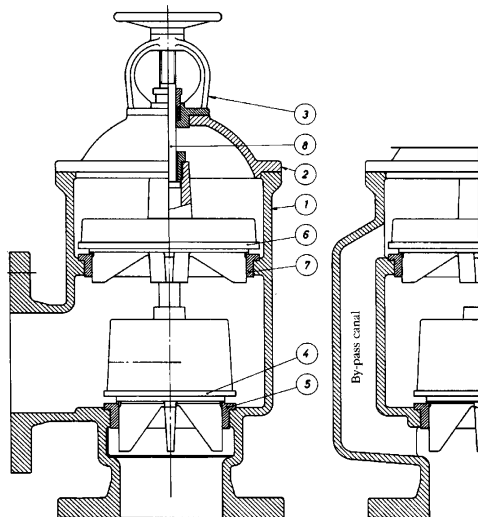
# Type 1500-FLF

<b>Specifications</b>	
<b>Type:</b>	1500-FLF
<b>Accuracy</b>	± 2%
<b>Dimensions:</b>	See drawing no.1500-FLF
<b>Settings:</b>	To fit application*
<b>Pressure drop in excess of set-pressure:</b>	Yes
<b>Valve type:</b>	Modulating
<b>Capacities:</b>	Up to 15,000 Nm <sup>3</sup> /hr
<b>Ice layer:</b>	Not applicable
<b>Materials:</b>	Cast iron, nodular iron, bronze, stainless steel

<b>Nominal sizes</b>	ND50 - 400
<b>Options</b>	Proximity switches, check-lifts

<b>Certification</b>	Complies with classification society rules when installed with an approved device to prevent the passage of flame according to IMO MSC/Circ.677. All Pres-Vac products are type approved by the leading classification societies and by relevant flag state administrations. Upon request certified copies of certificates will be furnished.
----------------------	--

\*To accommodate VECS, certain limitations must be observed. Please request API 2000 certification. Reduced loading rates will be experienced compared to individual venting systems.



Type 1500-FLF

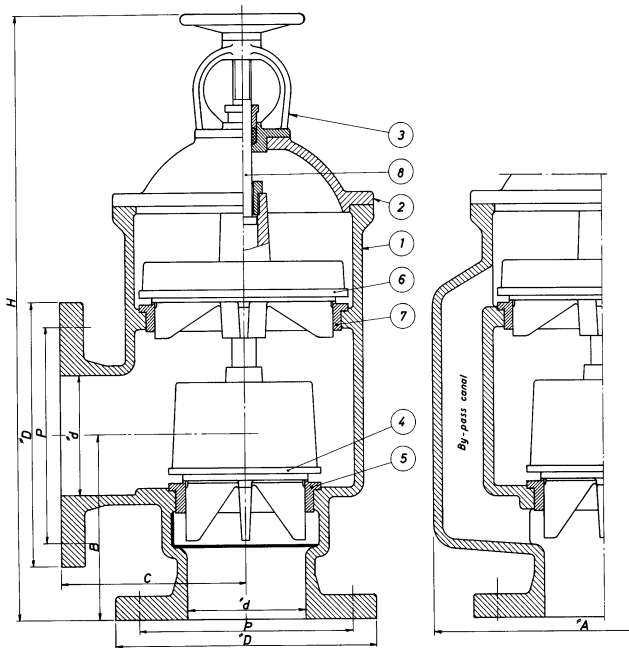
Item	Description
1	Valve body
2	Cover
3	Top cover
4	Pressure disc
5	Pressure seat
6	Vacuum disc
7	Vacuum seat
8	Spindle

drwg. no.:	1500-FLF
date:	763012
model:	-
drw. rev.:	-
drwg.:	-
scale:	-
material:	-

# Type FLF

Automatic weightloaded pressure/vacuum valve

16	400	860	480	380	1370	565	515	16x25
14	350	800	423	335	1150	540	460	16x22
10	250	560	345	255	900	395	350	12x22
8	200	470	260	210	790	340	295	8x22
6	150	320	196	158	610	285	240	8x22
4	100	285	155	155	550	220	180	8x18
3	80	225	145	125	490	200	160	4x18
2½	70	210	120	110	450	185	145	4x18
2	50	160	100	100	400	165	125	4x18
°d inch	°d mm	°A mm	B mm	C mm	H mm	°D mm	P-mm drilling	Holes



**Opening standard:**

- Pressure: 1400 mm W.G.
- Vacuum: 350 mm W.G.

Approved by:  
 Lloyds Register of Shipping  
 American bureau of Shipping  
 Det Norske Veritas  
 Bureau Veritas  
 USCG Cert. no. 162.017/121/1

**Parts list**

Item	Description	Spec. 1	Spec. 2
1	Valve body	Cast iron	Cast iron
2	Cover	Cast iron	Cast iron
3	Top cover	Bronze	Bronze
4	Pressure disc	Bronze	Stainless steel
5	Pressure seat	Bronze	Stainless steel
6	Vacuum disc	Bronze	Stainless steel
7	Vacuum seat	Bronze	Stainless steel
8	Spindle	Brass	Stainless steel

This drawing is for guidance only. Other sizes, materials, flange standards, settings, and versions are available. Request a specific quotation or approval drawing before implementing data.