

Type 1500-FLS

End-of-line Valve

End-of-line pressure/vacuum relief valve for openings used during cargo operation and for breathing during voyage. Mainly for use in common venting systems and for barges not subject to IMO or ADNR regulations.



End-of-line pressure/vacuum valve
type 1500-FLS

Type 1500-FLS is a weightloaded end-of-line pressure/vacuum relief valve intended for openings used during cargo operation, ballasting or voyage for thermal variation (and sloshing). The valve has separate pressure and vacuum units. Outlet to atmosphere is available with vertical efflux and flame screens (in an explosion safe execution) to comply with new IMO requirements, thus acceptable for use on new tankers. Installation requirements are 2 m or 6 m height depending on application. For use only on exclusively inerted vessels. Attention should be paid to the operational risks involved with the use of common venting systems because breather valves are generally not sufficient to handle ballasting or cargo transfer. Type 1500-FLS is approved by the U.S.C.G. for VECS.

Features of type 1500-FLS:

- Available in IMO certified version with vertical efflux and fire tested for exclusively inerted vessels.
- Separate pressure and vacuum units
- Approved as per API 2000 standard
- Available with self-closing checklifts
- Available in materials compatible with any cargo
- Easy maintenance
- Simple and rigid construction

Options: See specification



Alternative for light duty applications
such as inerted void spaces:

End-of-line pressure relief valve
type AMO for non-flammable venting

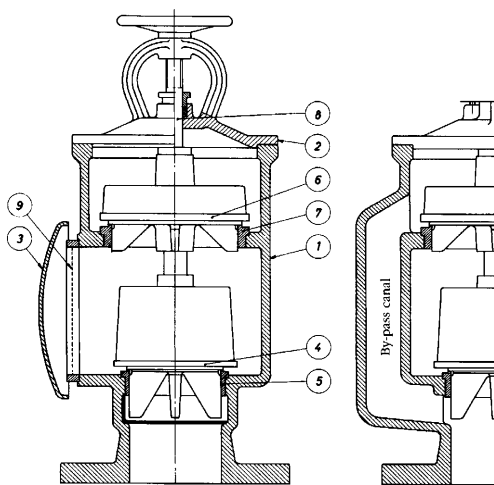
End-of-line pressure/ vacuum valve

Specifications	
Type:	1500-FLS
Dimensions:	See drawing No. 1500-FLS
Settings:*	To fit application. See certification curves
Capacities:	Up to 15,000 Nm ³ /hr. See certified curves
Pressure drop in excess of set-pressure:	Very soon after set pressure**
Valve type:	Modulating.
Ice layer:	20 mm on IMO versions
Materials:	Cast iron, nodular cast iron, bronze, stainless steel

Nominal sizes
ND50 - 400
Options
Proximity switches, heating jacket, IMO version, checklifts, vertical outlet

Certification
Certified by the danish government according to IMO MSC/Circ.677. Approved as per API 2000.
Installation only certified for some applications. Installation to be in accordance with IMO MSC/Circ. 731.
All Pres-Vac products are type approved by the leading classification societies and by relevant flag state administrations. Upon request certified copies of certificates will be furnished.

*For VECS operation certain limitations must be observed.
**Limited VECS capacity



Type 1500-FLS

The displayed version is for non-IMO vessels.

Item	Description
1	Valve body
2	Top cover
3	Venting cover
4	Pressure disc
5	Pressure seat
6	Vacuum disc
7	Vacuum seat
8	Spindle
9	Flame screen unit

Available with any connection and in any material requested. Please ask for detail drawing and performance data sheets for any specific model and type.