

Type EPV 1700-1

Vertical Efflux Flame Screen

Type EPV vertical efflux flame screen for mounting end-of-line is ideal for small and medium capacity applications. For high capacity applications, type VFA is recommended.



*End-of-line vertical efflux flame screen
type EPV*

Type EPV features a very rigid design with a relatively low pressure drop when subjected to the typical venting rates associated with riser stacks with diameter ND50 – 300. As required, type EPV features drainage ports. The flame screen unit is well protected against snow and ice – as required by IMO MSC/Circ.677 and CFR 46, § 154.1722 – and it is easily removed for inspection and cleaning. It is suitable for end-of-line systems where it functions at all times during voyage for thermal variation and sloshing. Replacement of spares is cost attractive due to the uncomplicated construction of the flame withholding element. Type EPV is fully IMO approved for exclusively inerted vessels and group II A gases. Complies with ASTM 1273. When selecting the right size of flame screen, the most important aspect is a careful pressure drop calculation according to IMO MSC/Circ.731 to ensure that the P/V valves do not operate prematurely or cause excessive leakage. The nominal size is secondary. Special IMO rules apply in regard of fouling.

Features of type EPV 1700-1:

- IMO approved as explosion safe
- Compact size featuring an inexpensive flame screen
- Efficient drainage
- Easy maintenance
- Simple and rigid design

Options: see specifications



*Alternative solution:
end-of-line flame arrester type EP, widely
used for off-shore applications*



*Alternative solution:
end-of-line flame arresters type VU for
applications not subjected to rain, snow etc.*

End-of line vertical efflux flame screen

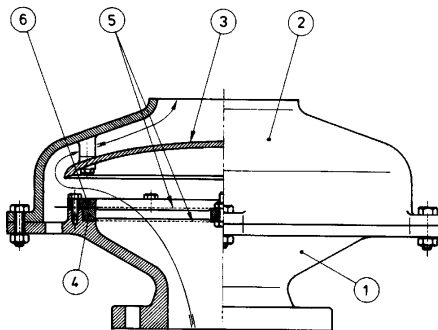
Specifications	
Type:	EPV
Dimensions:	See drawing No. 1700-1
Capacities:	Up to 10,000 Nm ³ /h. See certified curves*
Ice layer:	20 mm
Materials:	Cast iron, nodular cast iron, bronze, stainless steel

Options
Heating elements
Drainage connections

Certification:**
Certified by the Danish government according to IMO MSC/Circ.677. Application is limited to group II A gases. Installation to be in accordance with IMO MSC/Circ.731. All Pres-Vac products are type approved by the leading classification societies and by relevant flag state administrations. Upon request certified copies of certificates will be furnished

* Depending on vessel specification and the cargo vapor's physical properties.

** Reference is made to our special report on flme arresters.



Type EPV

Item	Description
1	Housing
2	Weather hood
3	Deflector
4	Net ring
5	Flame screen
6	Retaining ring

Available with any connection and in any material requested. Please ask for detail drawing and performance data sheets for any specific model and type.

6.5
REV.1

drwg. no.: 1700-1	
date: 851118	drwg.: -
model: -	scale: -
drw. rev.: -	material: -

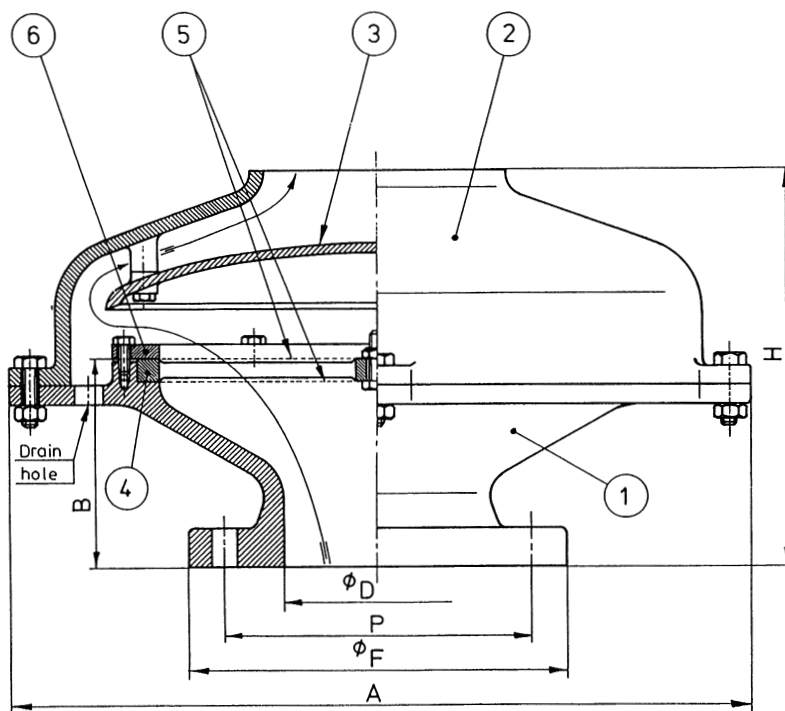
Type EPV

Flame screen unit for vertical discharge

Other standards available

12	300	835	170	390	445	400	12x22
10	250	720	160	350	395	350	12x22
8	200	620	145	290	340	295	8x22
6	150	510	120	235	285	240	8x22
5	125	440	115	230	250	210	8x18
4	100	360	105	205	220	180	8x18
3	80	315	95	195	200	160	4x18
2 1/2	65	315	95	195	200	160	4x18
2	50	315	95	195	165	125	4x18
$\varnothing d$ inch	$\varnothing d$ mm	A mm	B mm	H mm	$\varnothing F$ mm	P-mm drilling	Holes

This drawing is for guidance only. Other sizes, materials, flange standards, settings, and versions are available. Request a specific quotation or approval drawing before implementing data.



Approved by:
IMO MSC/Circ. 677

Parts list

Item	Description	Spec. 1	Spec. 2	Spec. 3
1	Housing	Cast iron	Bronze	Stainless steel
2	Weather hood	Cast iron	Bronze	Stainless steel
3	Deflector	Cast iron	Bronze	Stainless steel
4	Net ring	Bronze	Bronze	Stainless steel
5	Flame screen	Stainless steel	Stainless steel	Stainless steel
6	Retaining ring	Steel	Bronze	Stainless steel