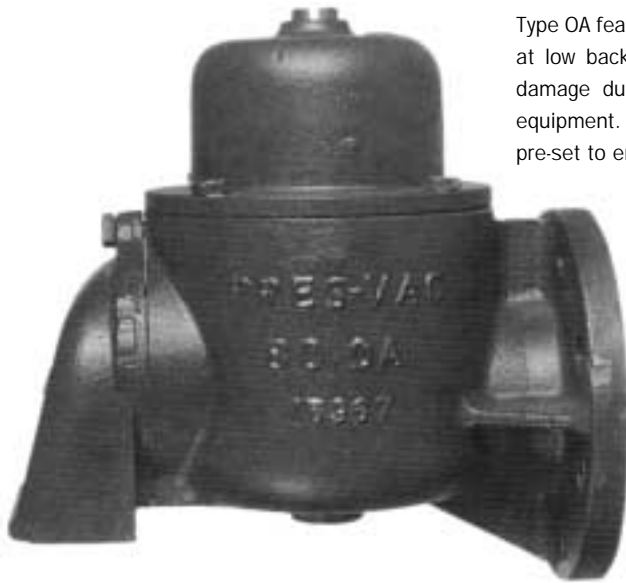


Type OA 1809

Overflow Relief Valve

Overflow relief valve type OA allows the designer to predetermine an adequate location for overflow when connecting the valve to the header.



Overflow relief valve type OA

Type OA features a highlifting characteristic enabling considerable relief at low backpressure as a last resort safety means to prevent tank damage due to overfilling, a task not covered by ordinary venting equipment. The valve is provided with a checklift as standard and is pre-set to ensure that it does not open unless subjected to liquid.

Features of type OA 1809:

- Automatic mode
- High capacity at low back-pressure
- Well-proven design
- Simple and rigid design

Options: See specification

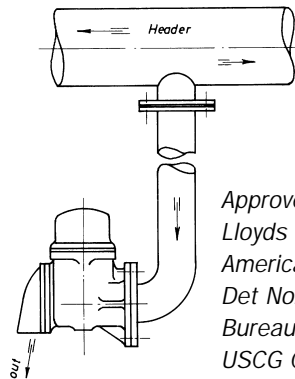
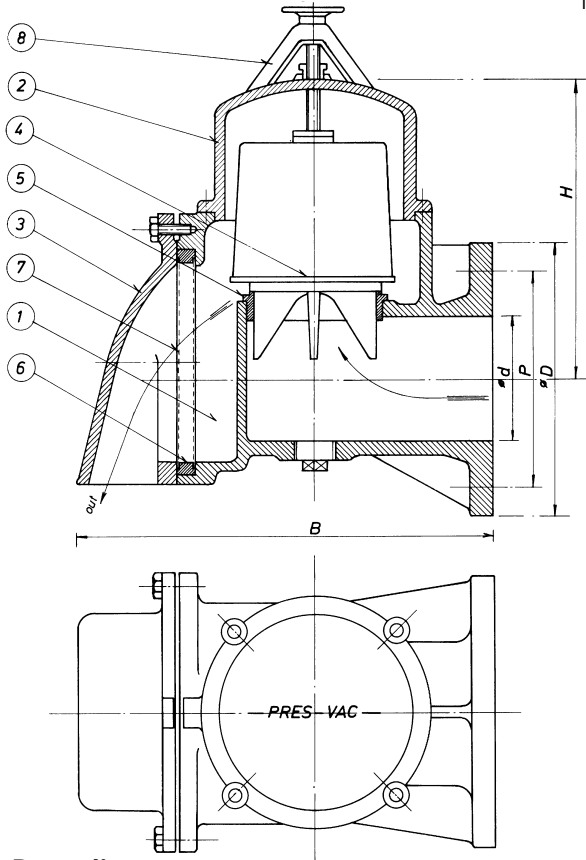
drwg. no.:	1809
date:	9/10/07
model:	-
drw. rev.:	1
drwg.:	Æ
scale:	-
material:	-

Type OA

Pressure relief valve (overflow)

12	300	600	725	445	400	12x22
10	250	535	590	395	350	12x22
8	200	485	510	340	295	8x22
6	150	325	425	285	240	8x22
4	100	260	340	220	180	8x22
3	80	215	308	200	160	4x18

[°]d inch d mm H mm B mm [°]D mm P-mm Holes drilling



Approved by:
 Lloyds Register of Shipping
 American bureau of Shipping
 Det Norske Veritas
 Bureau Veritas
 USCG Cert. no. 162.017/131/0

Opening pressure:

■ 1-3 lbs/sq. inch

Parts list

Item	Description	Spec. 1	Spec. 2	Spec. 3
1	Valve body	Cast iron	Cast iron	Bronze
2	Top cover	Cast iron	Cast iron	Bronze
3	Venting cover	Cast iron	Cast iron	Bronze
4	Valve sids	Bronze	Stainless steel	Bronze
5	Valve seat	Bronze	Stainless steel	Bronze
6	Netring	Bronze	Stainless steel	Bronze
7	Protecting screen	Stainless steel	Bronze	Stainless steel
8	Lifting gear, optional	Brass	Stainless steel	Bronze

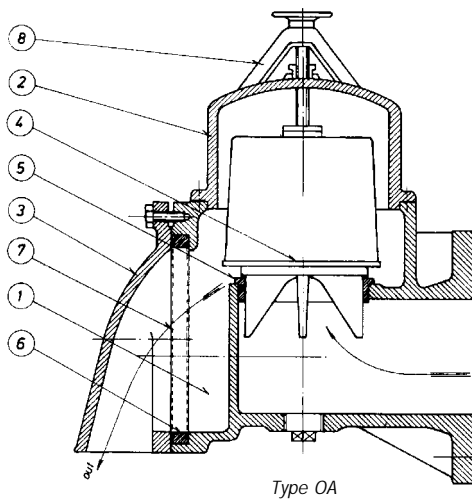
This drawing is for guidance only. Other sizes, materials, flange standards, settings, and versions are available. Request a specific quotation or approval drawing before implementing data.

Overflow relief valve

Specifikations:
Type: OA
Dimensions: See drawing no. 1809
Capacity: Depends on height of installation. See certified curve
Ice layer: Not applicable

Nominal sizes: ND80 - 300
Options: Proximity switches, flame screens

Certification: Complies with classification society rules and is U.S.C.G. approved.



Item	Description
1	Valve body
2	Top cover
3	Venting cover
4	Valve disc
5	Valve seat
6	Netring
7	Protecting screen
8	Lifting gear, optional

Available with any connection and in any material requested. Please ask for detail drawing and performance data sheets for any specific model and type.