

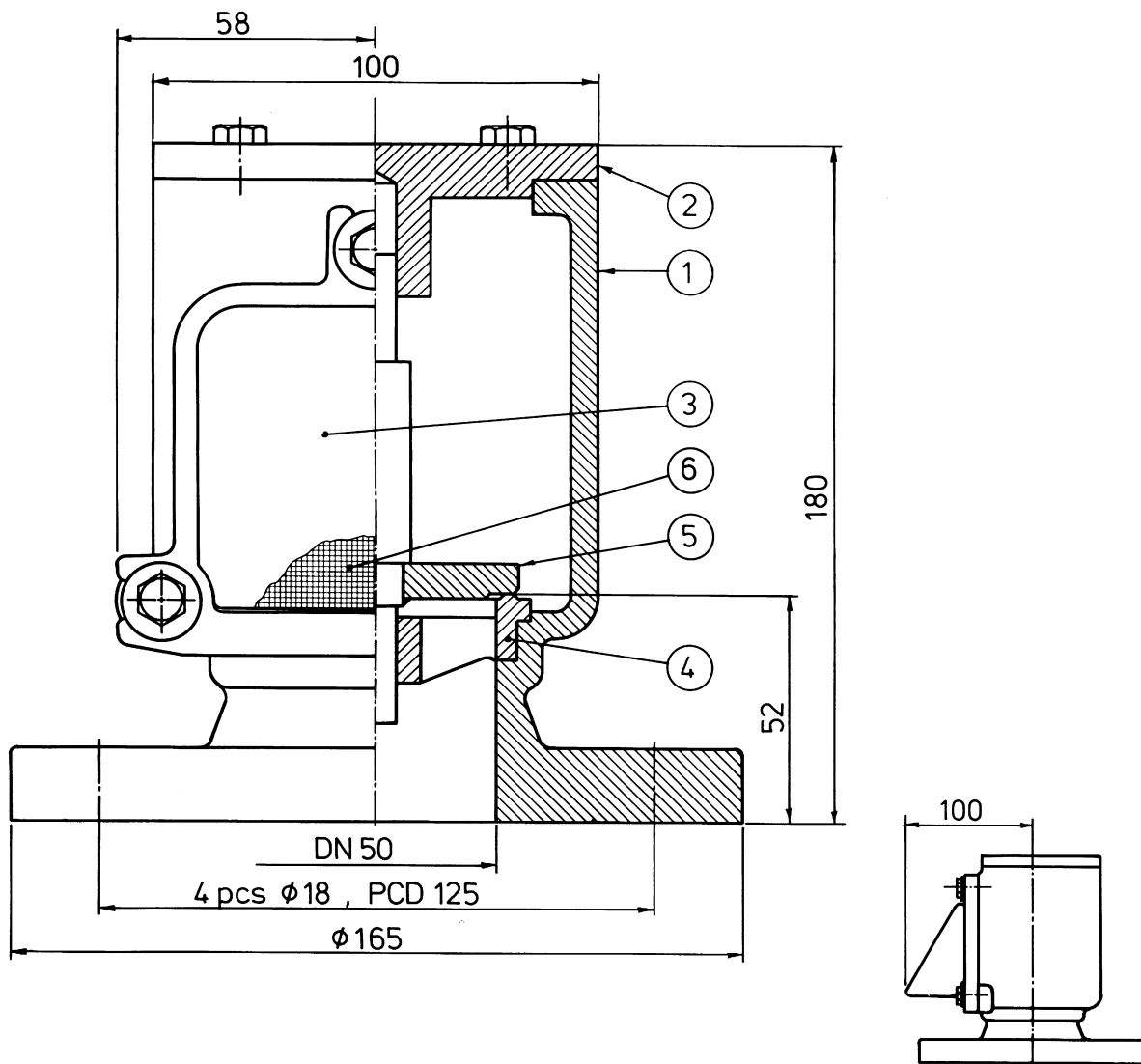
drwg. no.:	2364
date:	920811
model:	-
drw. rev.:	0
drwg.:	AP
scale:	-
material:	-

Type AMO

Automatic weightloaded pressure valve

Opening standard:

Pressure: 150 mm W.G.



Parts list

Item	Description	Spec. 1	Spec. 2
1	Housing	Cast iron	Cast iron
2	Cover	Brass	Stainless steel
3	Side cover	Cast iron	Cast iron
4	Pressure seat	Bronze	Stainless steel
5	Pressure disc	Bronze	Stainless steel
6	Protecting screen	Stainless steel	Stainless steel

This drawing is for guidance only. Other sizes, materials, flange standards, settings, and versions are available. Request a specific quotation or approval drawing before implementing data.