

Various end-of-line valves

M-Series

End-of-line Valve

The M-Series represent a wide range of conventional end-of-line pressure/vacuum valves for automatic control of pressure and vacuum conditions in enclosed spaces. Each valve in the M-Series is tested and approved to classification society requirements. All types can be fitted with fine wire mesh gauze easily removable for cleaning, inspection or renewal. M-Series valves are widely used with both marine and shorebased facilities.



M 1400 - Weightloaded pressure/vacuum valve for low settings



M 1450 - As M 1400 but for large capacities and primarily cast iron versions



M2 2253 - Weightloaded pressure/vacuum valve for all settings for high capacity applications. Noiseless. Double outlet from size 2,5" and upwards for reduced pressure drop.



M1 2242 - Spring supported pressure/vacuum valve for high settings. Double outlet for reduced pressure drop



M2 2253-1 - As M2 2253, but with lifting gear for manual operation. Double outlet from size 2,5" and upwards



M10 2313 - Spring supported pressure/vacuum valve with high settings for low capacity applications



M2 2248 - Spring supported vacuum valve. Double inlets

Features of Type M-series:

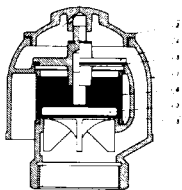
- Automatic operation
- Checklifts are available (optional)
- Available in materials compatible with any cargo
- Simple, rigid design and construction
- Easy maintenance

Options: See specification

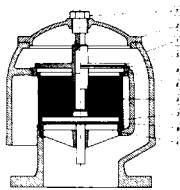
End-of-line pressure/vacuum valves

<p>Specifications</p> <p>Type: M 1400, M 1450, M1 2242, M10 2313, M2 2253, M2 2253-1, M3 2248</p> <p>Dimensions: See drawings</p> <p>Capacities: See certified curves</p> <p>Pressure drop in excess of set-pressure: Yes</p> <p>Valve type: Modulating</p> <p>Self-closing check-lifts: Optional</p> <p>Icy layer: Not applicable</p> <p>Settings: To fit application</p> <p>Materials: Cast iron, nodular iron, bronze, aluminium, stainless steel</p>	<p>Nominal sizes* ND25 - 500</p> <p>Options Proximity switches, heating jacket, Soft seats, checklifts</p>	<p>Certification Approved by leading societies for non-flammable handling. Not IMO approved for cargo tanks unless specifically stated. All Pres-Vac products are type approved by the leading classification societies and by relevant flag state administrations. Upon request certified copies of certificates will be furnished.</p>
--	--	---

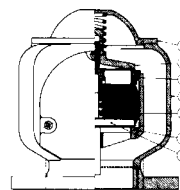
*Some models may not be readily available throughout the range



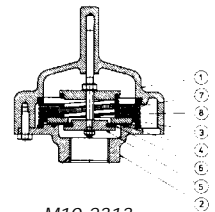
M 1400



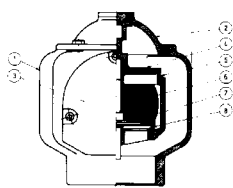
M 1450



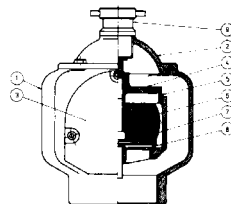
M1 2242



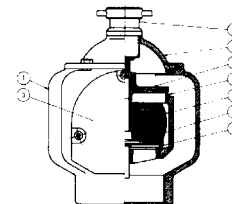
M10 2313



M2 2253



M2 2253-1



M3 2248

Please refer to detail-drawings for item/description reference and data

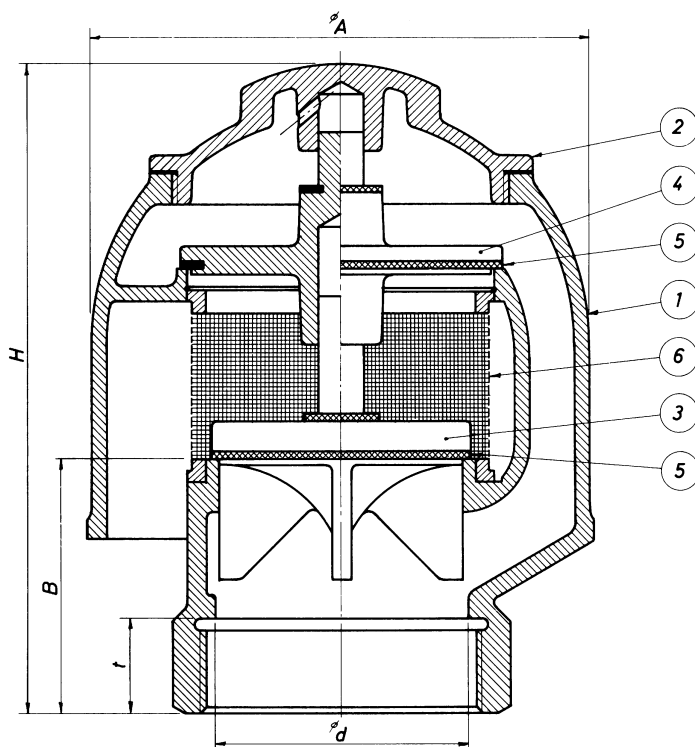
Available with any connection and in any material requested. Please ask for detail drawing and performance data sheets for any specific model and type.

drwg. no.:	1400
date:	drwg.:
model:	scale:
drw. rev.:	material:

Type M

Automatic weightloaded pressure/vacuum valve

5	125	236	270	103	35
4	100	195	225	90	30
3	80	155	190	74	28
2½	70	133	172	67	25
2	50	107	145	55	20
1½	40	90	120	50	17
1¼	32	90	120	50	17
1	25	90	120	50	17
°d inch	°d mm	°A mm	H mm	B mm	t mm



Opening standard:
 Pressure: 150-200 mm W.G.
 Vacuum: 80-100 mm W.G.

Approved by:
 Lloyds Register of Shipping
 Det Norske Veritas
 American bureau of Shipping
 RINA
 Bureau Veritas
 Germanische Lloyd
 USSR Register of shipping

Parts list

Item	Description	Spec. 1
1	Valve body	Bronze
2	Top cover	Bronze
3	Pressure disc	Bronze
4	Vacuum disc	Bronze
5	Disc rings	Neoprene
6	Protecting screen	Stainless steel

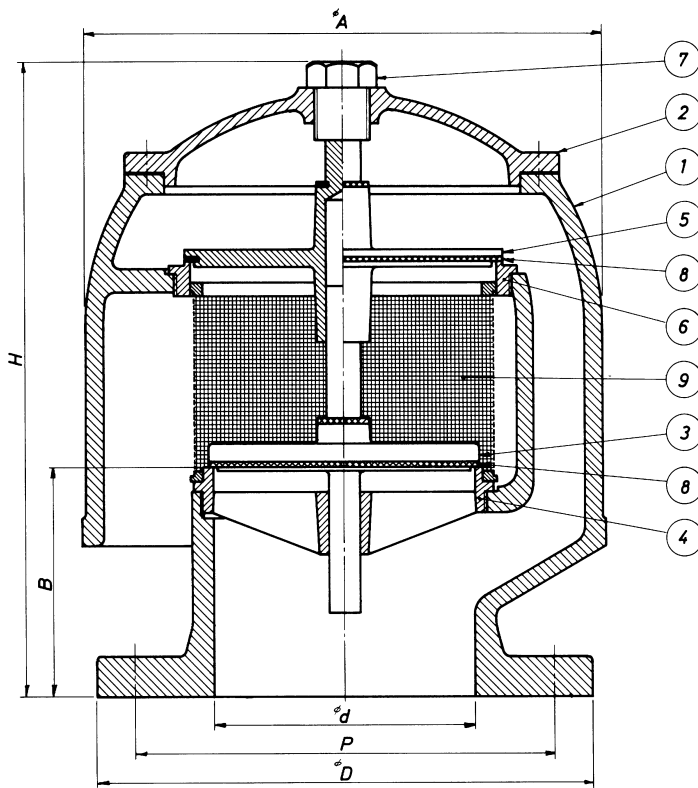
This drawing is for guidance only. Other sizes, materials, flange standards, settings, and versions are available. Request a specific quotation or approval drawing before implementing data.

drwg. no.:	1450
date:	drwg.:
model:	scale:
drw. rev.:	material:

Type M

Automatic weightloaded pressure/vacuum valve

8	200	390	145	445	340	295	8x22
7	175	345	140	375	315	270	8x22
6	150	295	130	360	285	240	8x22
$\varnothing d$ inch	$\varnothing d$ mm	A mm	B mm	H mm	$\varnothing D$ mm	P-mm drilling	holes drilling



Opening standard:
 Pressure: 150-200 mm W.G.
 Vacuum: 80-100 mm W.G.

Approved by:
 Lloyds Register of Shipping
 Det Norske Veritas
 American bureau of Shipping
 RINA
 Bureau Veritas

Parts list

Item	Description	Spec. 1
1	Valve body	Cast iron
2	Top cover	Cast iron
3	Pressure disc	Bronze
4	Pressure seat	Bronze
5	Vacuum disc	Bronze
6	Vacuum seat	Bronze
7	Valve guide	Brass
8	Disc ring	Neoprene
9	Protecting screen	Stainless steel

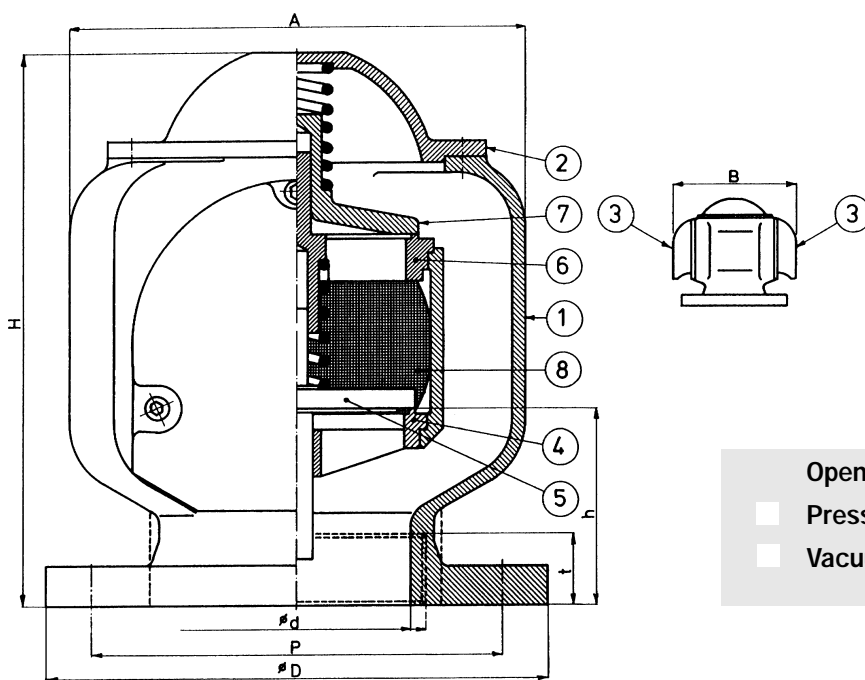
This drawing is for guidance only. Other sizes, materials, flange standards, settings, and versions are available. Request a specific quotation or approval drawing before implementing data.

drwg. no.:	2242
date:	920403
model:	-
drw. rev.:	3
drwg.:	JAS
scale:	-
material:	-

Type M1

Automatic springloaded pressure/vacuum valve

Female thread or flange	Flange									
	10	250	480	600	520	168		395	350	12x°22
	8	200	386	470	420	144		340	295	8x°22
	5	125	244	330	270	96		250	210	8x°18
	4	100	200	265	240	83	30	220	180	8x°18
	3	80	162	225	185	67	25	200	160	4x°18
	2½	70	162	225	185	67	25	185	145	4x°18
	2	50	162	225	185	67	25			
	°d inch	°d mm	A mm	B mm	H mm	h mm	t mm	°D mm	P-mm drilling	Holes



Opening standard:

- Pressure: 1400 mm W.G.
- Vacuum: 350 mm W.G.

Parts list

Item	Description	Spec. 1
1	House	Cast iron
2	Top cover	Cast iron
3	Side cover	Cast iron
4	Pressure seat	Bronze
5	Pressure disc	Bronze
6	Vacuum seat	Bronze
7	Vacuum disc	Bronze
8	Protecting screen	Stainless steel

This drawing is for guidance only. Other sizes, materials, flange standards, settings, and versions are available. Request a specific quotation or approval drawing before implementing data.

drwg. no.:	2313
date:	811012
model:	-
drw. rev.:	0
drwg.:	HHR
scale:	-
material:	-

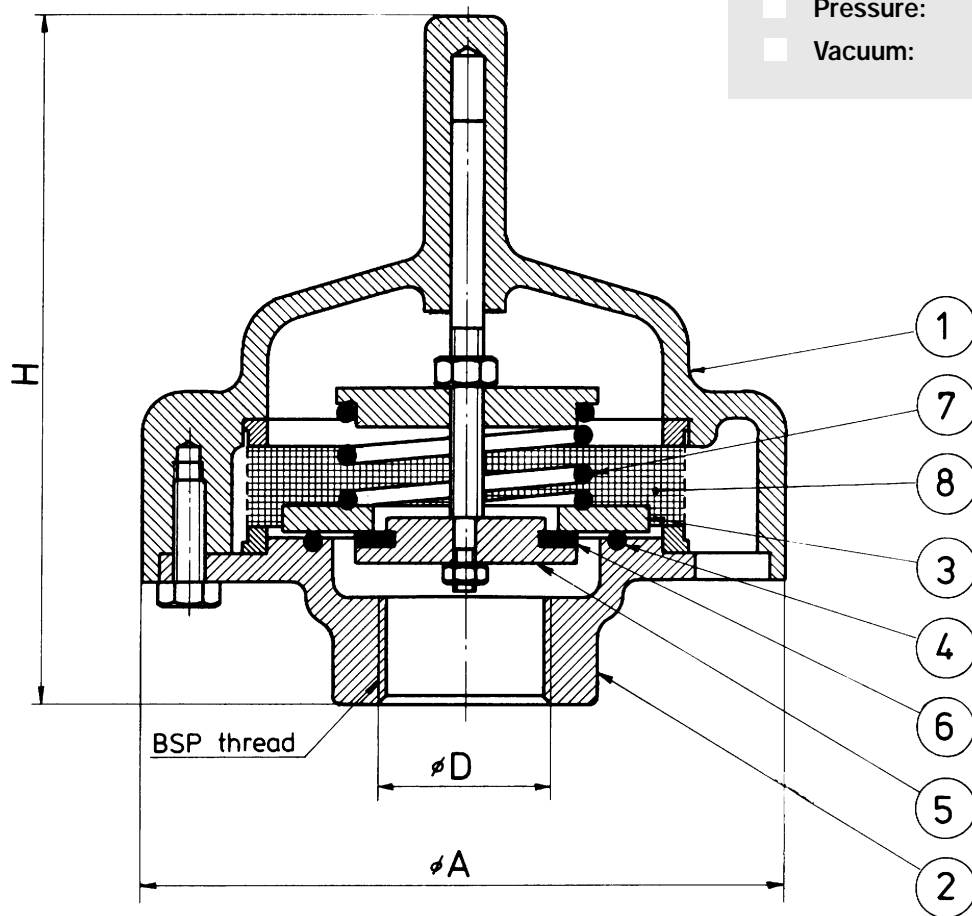
Type M-10

Pressure/vacuum valve

1	25	122	128
D	D	A	H
inch	mm	mm	mm

Opening standard:

- ☐ Pressure: 200 mm W.G.
- ☐ Vacuum: 100 mm W.G.



Parts list

Item	Description	Spec. 1	Spec. 2
1	Valve body	Stainless steel	Stainless steel
2	Valve body (lower part)	Stainless steel	Stainless steel
3	Pressure disc	Stainless steel	Stainless steel
4	Pressure seat	Neoprene	Teflon
5	Vacuum disc	Stainless steel	Stainless steel
6	Vacuum seat	Neoprene	Teflon
7	Spring	Stainless steel	Stainless steel
8	Protecting screen	Stainless steel	Stainless steel

This drawing is for guidance only. Other sizes, materials, flange standards, settings, and versions are available. Request a specific quotation or approval drawing before implementing data.

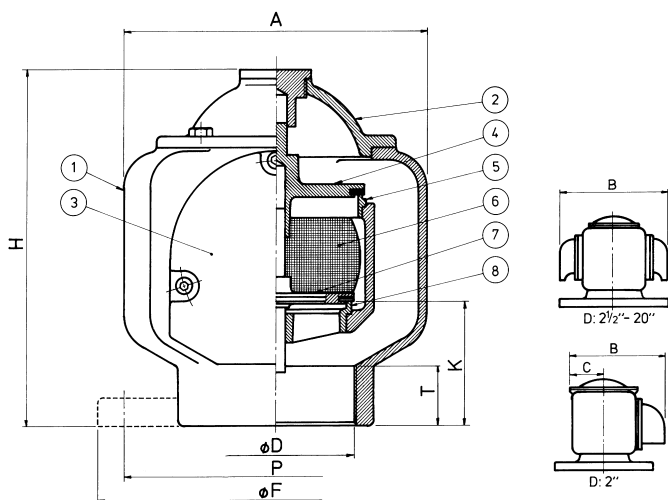
drwg. no.:	2253
date:	840410
model:	-
drw. rev.:	2
drwg.:	FM
scale:	-
material:	-

Type M2

Automatic noiseless weightloaded valve

This drawing is for guidance only. Other sizes, materials, flange standards, settings, and versions are available. Request a specific quotation or approval drawing before implementing data.

Flange	20	500	1105	1180		1150	385		670	620	20x26
	18	450	980	1040		1030	325		615	565	20x26
	16	400	850	910		910	286		565	515	16x26
	14	350	735	750		775	247		505	460	16x22
	12	300	625	745		640	222		445	400	12x22
	10	250	480	600		520	168		395	350	12x22
	8	200	386	470		425	144		340	295	8x22
	6	150	290	370		345	129		285	240	8x22
Female thread or flange	5	125	245	335		275	102		250	210	8x18
	4	100	200	270		255	83	40	220	180	8x18
	3	80	162	225		195	67	30	200	160	4x18
	2½	65	162	225		195	67	30	185	145	4x18
	2	50	130	125	40	205	65	35	165	125	4x18
	D	D	A	B	C	H	K	T	F	P-mm	Holes drilling
	inch	mm	mm	mm	mm	mm	mm	mm	mm		



Opening standard:

- Pressure: 100-150 mm W.G.
- Vacuum: 80-100 mm W.G.

Approved by:
 Det Norske Veritas
 Lloyds Register of Shipping
 American bureau of Shipping
 RINA
 Germanischer Lloyd
 Bureau Veritas

Available in other materials

Parts list

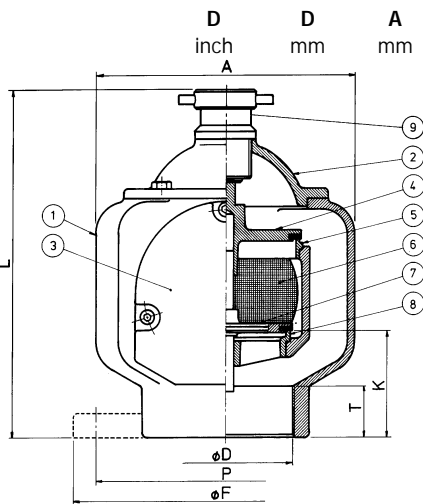
Item	Description	Spec. 1	Spec. 2	Spec. 3
1	Valve body	Cast iron	Cast iron	Bronze
2	Top cover	Cast iron	Cast iron	Bronze
3	Side cover	Cast iron	Cast iron	Bronze
4	Vacuum disc	Bronze	Stainless steel	Bronze
5	Vacuum seat	Bronze	Stainless steel	Bronze
6	Protecting screen	Stainless steel	Stainless steel	Stainless steel
7	Pressure disc	Bronze	Stainless steel	Bronze
8	Pressure seat	Bronze	Stainless steel	Bronze

drwg. no.: 2253-1	
date: 840410	drwg.: FM
model: -	scale: -
drw. rev.: 3	material: -

Type M2

Automatic noiseless weightloaded valve with lifting gear

Flange	20	500	1105	1410		1150	385		670	620	20x26
	18	450	980	1275		1030	325		615	565	20x26
	16	400	850	1135		910	285		565	515	16x26
	14	350	735	985		775	248		505	460	16x22
	12	300	625	715		640	222		445	400	12x22
	10	250	480	600		520	168		395	350	12x22
	8	200	386	500		425	144		340	295	8x22
	6	150	290	405		245	129		285	240	8x22
	5	125	245	340		275	102		250	210	8x18
Female thread or flange	4	100	200	305		255	83	40	220	180	8x18
	3	80	162	235		195	67	30	200	160	4x18
	2½	65	162	235		195	67	30	185	145	4x18
	2	50	130	215	40	205	65	35	165	125	4x18



Available in other materials

Opening standard:

- Pressure: 100-150 mm W.G.
- Vacuum: 80-100 mm W.G.

Approved by:
 Det Norske Veritas
 Lloyds Register of Shipping
 American bureau of Shipping
 RINA
 Germanischer Lloyd
 Bureau Veritas

Parts list

Item	Description	Spec. 1	Spec. 2	Spec. 3
1	Valve body	Cast iron	Cast iron	Bronze
2	Top cover	Cast iron	Cast iron	Bronze
3	Side cover	Cast iron	Cast iron	Bronze
4	Vacuum disc	Bronze	Stainless steel	Bronze
5	Vacuum seat	Bronze	Stainless steel	Bronze
6	Protecting screen	Stainless steel	Stainless steel	Stainless steel
7	Pressure disc	Bronze	Stainless steel	Bronze
8	Pressure seat	Bronze	Stainless steel	Bronze
9	Lifting gear	Brass	Stainless steel	Brass

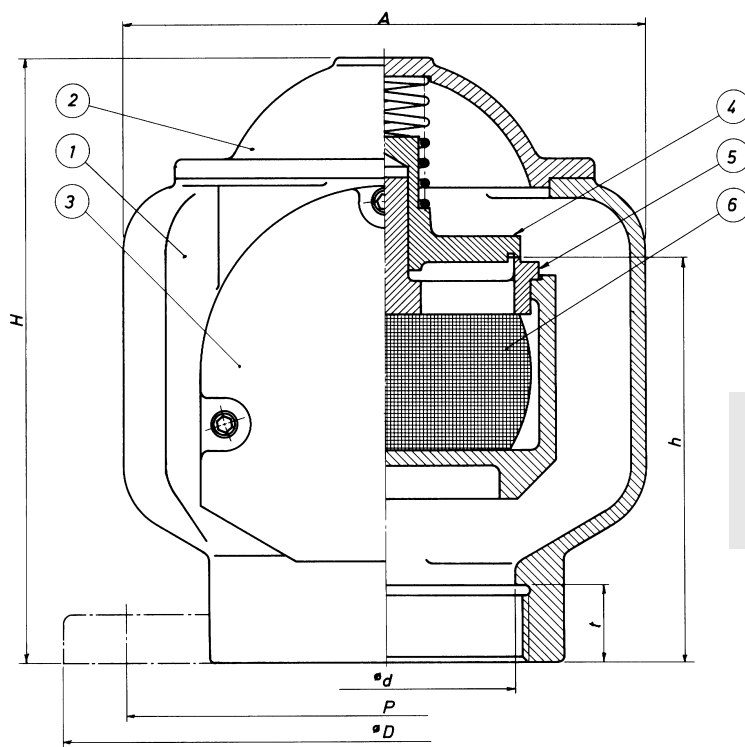
This drawing is for guidance only. Other sizes, materials, flange standards, settings, and versions are available. Request a specific quotation or approval drawing before implementing data.

drwg. no.:	2248
date:	drwg.:
model:	scale:
drw. rev.:	material:

Type M3

Spring or weightloaded vacuum valve

Female thread or flange	4	100	200	230	245	161	30	220	180	8x18
	3	80	162	225	190	125	24	200	160	4x18
	2½	70	162	225	190	125	24	185	145	4x18
	2	50	162	225	190	125	24			
	°d inch	°d mm	°A mm	B mm	C mm	H mm	h mm	°D mm	P-mm drilling	Holes



Opening standard:

■ Vacuum: 350 mm W.G.

Approved by:
Lloyds Register of Shipping
Det Norske Veritas
Bureau Veritas
American bureau of Shipping

Delivered to german reactor ship "OTTO HAHN"

Available in other materials upon request

Parts list

Item	Description	Spec. 1
1	Valve body	Cast iron
2	Top cover	Cast iron
3	Side cover	Cast iron
4	Vacuum disc	Bronze
5	Vacuum seat	Bronze
6	Safety gauze	Stainless steel

This drawing is for guidance only. Other sizes, materials, flange standards, settings, and versions are available. Request a specific quotation or approval drawing before implementing data.